

# Atlas Copco Industrial Technique AB



**Harri Holm**

[harri.holm@se.atlascopco.com](mailto:harri.holm@se.atlascopco.com)



# Compare 2D, 3D & BOM

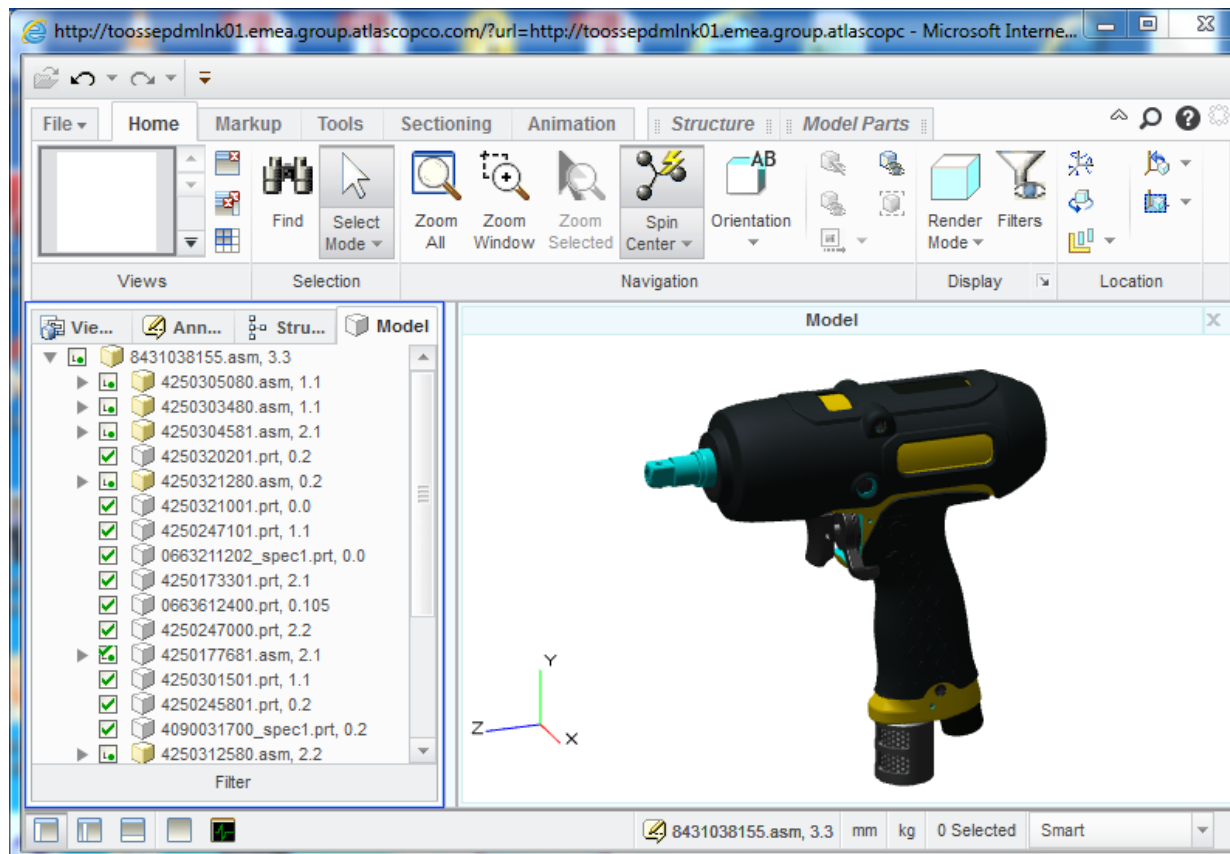
- Jämföra Ritningar
- Jämföra Modeller
- Jämföra CAD- och WTPart-struktur

# Compare 2D, 3D & BOM

Creo View Express

Creo View Lite

Creo View MCAD



# Compare 2D, 3D & BOM

- **Jämföra Ritningar**
- Jämföra Modeller
- Jämföra CAD- och WTPart-struktur

# Compare 2D

## Jämföra Ritningar

**Technical Drawing Details:**

- Top View:** Shows a circular diffuser with four mounting holes. Section lines A-A and B-B are indicated.
- Side View:** Shows the profile of the diffuser with dimensions for diameter and thickness.
- Cross-section (A-A):** Shows the internal structure of the diffuser, including a central hole and internal ribs.
- Section (B-B):** Shows a detail of the mounting holes and their spacing.

**Annotations and Dimensions:**

- Dimensions:  $\phi 140$ ,  $\phi 100$ ,  $\phi 70$ ,  $\phi 50$ ,  $\phi 30$ ,  $\phi 10$ ,  $\phi 5$ ,  $\phi 2$ ,  $\phi 1$ ,  $\phi 0.5$ .
- Section lines: A-A, B-B.
- Material: **Aluminum**.
- Surface finish: **RA 0.8**.
- Surface treatment: **Aluminum Oxide**.
- Surface texture: **0.8**.

**Technical Specifications:**

- Material: **Aluminum**
- Surface finish: **RA 0.8**
- Surface treatment: **Aluminum Oxide**
- Surface texture: **0.8**

**For non dimensioned geometry (if applicable):**

- Calculated filter volume: **15000**
- Calculated flow width: **4.5 kg**
- Filter: **NBR, Shore hardness 60**

**Legend:**

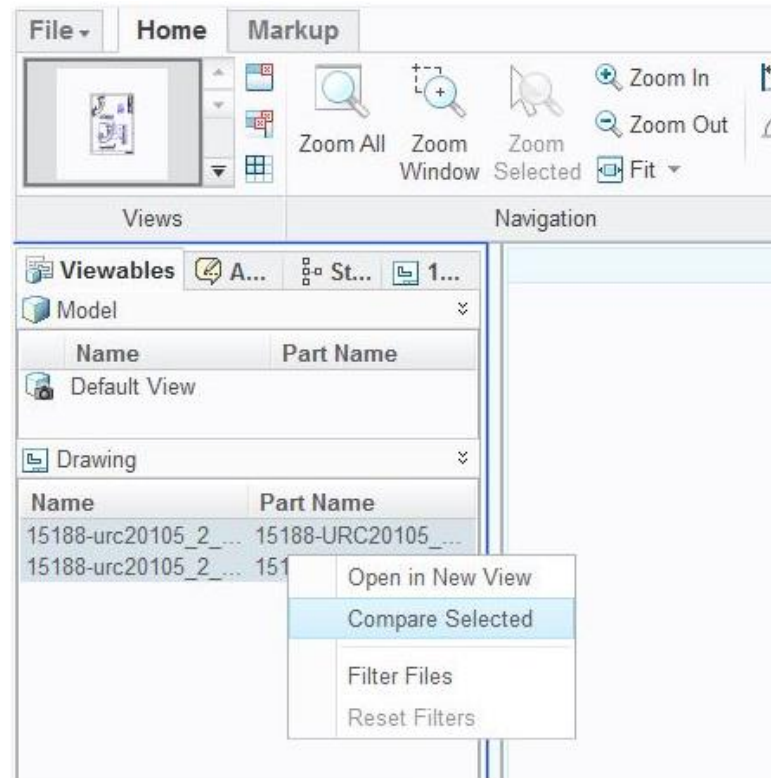
- 0: Not dimensioned
- 1: Dimensioned
- 2: Dimensioned (if applicable)
- 3: Dimensioned (if applicable)
- 4: Dimensioned (if applicable)
- 5: Dimensioned (if applicable)
- 6: Dimensioned (if applicable)
- 7: Dimensioned (if applicable)
- 8: Dimensioned (if applicable)
- 9: Dimensioned (if applicable)

**Company Information:**

- Atlas Copco**
- DIFFUSOR CENTER**
- 3081600419**
- In Work**

# Compare 2D

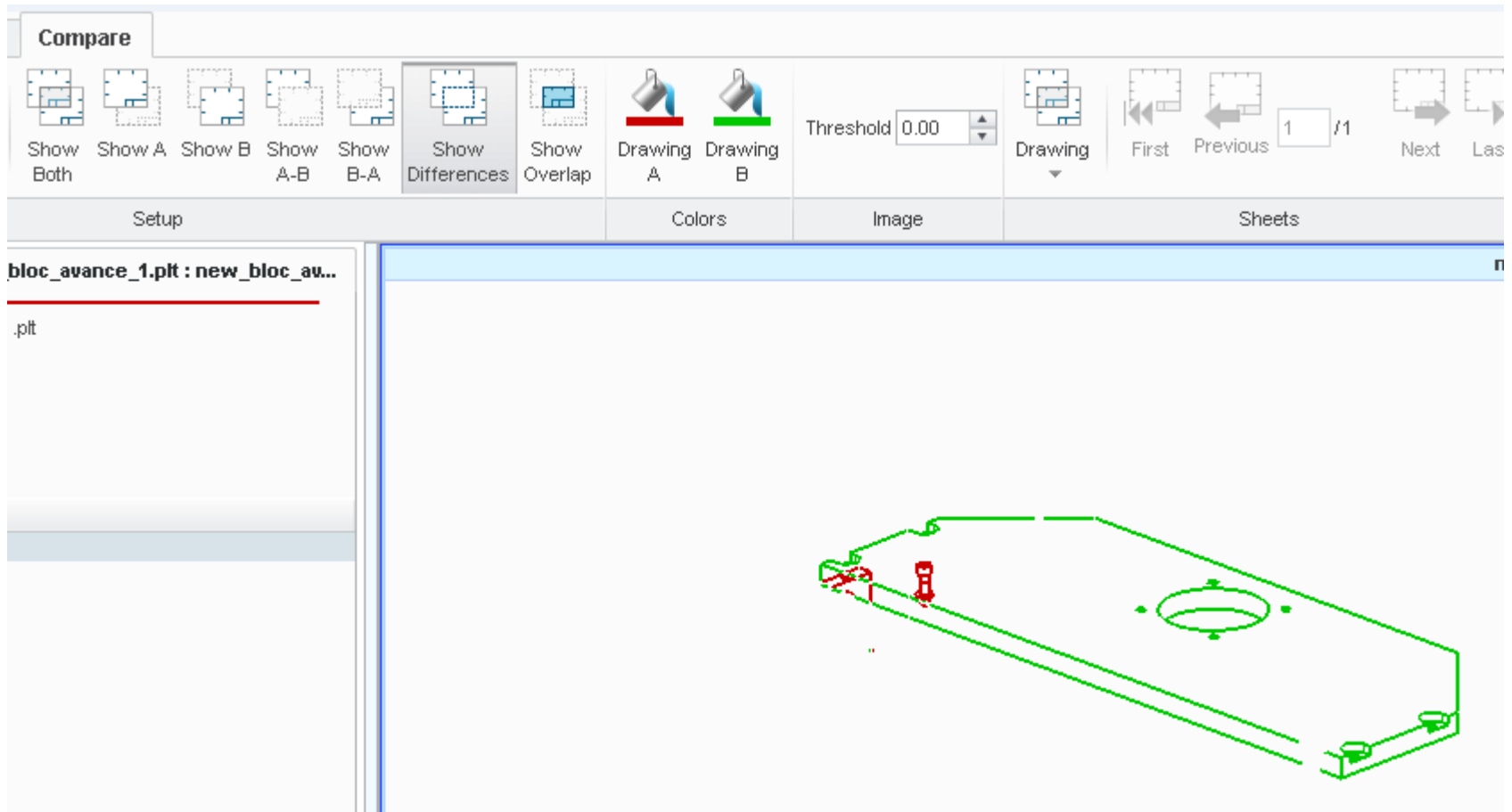
## Jämföra Ritningar med Creo View MCAD



# Compare 2D

The screenshot displays the 'Compare 2D' software interface. The top ribbon includes tabs for 'File', 'Home', 'Markup', and 'Compare'. The 'Compare' tab is active, showing options for alignment (Origin, Center, References) and visibility (Show Both, Show A, Show B, Show A-B, Show B-A, Differences, Show Overlap). It also features 'Drawing A' and 'Drawing B' selection tools, a 'Threshold' set to 0.00, and navigation buttons for 'Drawing', 'First', 'Previous', 'Next', and 'Last'. The left sidebar shows the active drawing 'new\_bloc\_avance\_1.pt' with dimensions (Width: 420,508006; Height: 297,508004) and paper size 'A3'. Below this, another drawing 'new\_bloc\_avance\_2.pt' is partially visible. The main workspace shows a 3D assembly model with a green bounding box around a top section. The model is annotated with numbered callouts (4, 15, 5, 36, 39, 23, 14, 2, 19, 20, 12, 29, 39, 22, 6, 21, 16) and a dashed circle labeled 'A'.

# Compare 2D





# Compare 2D

## Jämföra Ritningar "budget"

Technical drawing comparing a standard design (left) with a simplified 'budget' design (right) for a mechanical part. Both drawings include front, top, and section views (A-A and B-B).

**Standard Drawing (Left):**

- Material: 4130 Steel (SAE 5140)
- Surface finish: Ra 0.8 μm
- Surface treatment: Phosphate
- Material properties table:

Property	Value
Yield strength	570 N/mm²
Tensile strength	760 N/mm²
Elongation	12%
Impact energy	27 J

**Budget Drawing (Right):**

- Material: 4130 Steel (SAE 5140)
- Surface finish: Ra 1.6 μm
- Surface treatment: Phosphate
- Material properties table:

Property	Value
Yield strength	570 N/mm²
Tensile strength	760 N/mm²
Elongation	12%
Impact energy	27 J

**Title Block (Bottom Right):**

DIFFUSOR CENTER  
3081600419 In Work 1

# Compare 2D

**Technical Drawing Data:**

Part no.	LAD model no.	Comments	Drawing sheet
430F6004	430F6004_0	Rubber seal	1
430F6004_T_01	430F6004_T_01	Machined	2
430F6004_M_01	430F6004_M_01	Cast Steel	3
430F6004_W_01	430F6004_W_01	Devices	4

**Material and Properties:**

- Material: Rubber
- Version: 1
- Part no. - version: 430F6004\_01
- MARKING (See table)

**Dimensions and Tolerances:**

- Outer Diameter:  $\varnothing 100$
- Inner Diameter:  $\varnothing 20$
- Thickness: 10
- Radius: R10
- SKL surface free from rubber

**Notes:**

- Tolerances, if not indicated on drawing, according to AC 510.
- Rubber: 150 R
- Tolerance for non-dimensional surfaces unless otherwise stated.
- MARKING
- Versus nominal geometry in corresponding solid CAD model.
- Substituted part: (unless otherwise specified)
- Version no.: 1 - 10-100-1000-1
- For non-dimensional geometry of rubber see model 430F6004R\_01.
- Calculated rubber volume: 1500(796)
- Calculated frame weight: 4.5 kg
- Rubber NBR, Shore hardness 80

**Metadata:**

- Created/Modified: 17-Aug-16 09:12
- Author: sgg
- Project: DN AC-4300 / NBR
- Sheet: 1 of 1
- Company: Atlas Copco
- Product: DIFFUSOR CENTER
- Part no.: 30816004.19
- Scale: 1:1
- Work: 1

# Compare 2D

**Technical Drawing Details:**

- Views:** Front view, Section A-A, Section B-B, and isometric views.
- Dimensions:**
  - Outer diameter:  $\varnothing 400$
  - Inner diameter:  $\varnothing 190$  (Rubber)
  - Inner diameter:  $\varnothing 251$
  - Outer diameter:  $\varnothing 378$
  - Section A-A width:  $\varnothing 5.77$
  - Section B-B width:  $\varnothing 251$
  - Section B-B height:  $11.72$
  - Section B-B thickness:  $3.66 \pm 0.05$
- Surface Treatment:** Seal surface free from rubber; Pores 0.05mm.
- Markings:** MARKING (See table) Date of rubberising (Year-Month) "YY-MM"; MARKING (See table) Part no. - Versus "S081 6004 9-1"

**Table 1: List of CAD models**

CAD model no.	Rev.	10-Apr-16 09:10
A3081600417_S1	5.0	
A3081600418_M1	5.1	
A3081600419_P1	5.1	

**Table 2: Part Information**

Part no.	CAD model no.	Comments	Drawing sheet
3081600416	A3081600416	Rubberised	1
3081600418	A3081600418_M1	Machined	2
3081600419	A3081600419_S1	Cast blank	3
		Revisions	4

**Table 3: Material Properties**

Material	SA	Material	TM AC-4130 / NBR	Material	MEGA 100
Internal		Internal		See table on sheet 1	

**Table 4: Weight and Volume**

Property	Value
Calculated rubber volume	1700127mm <sup>3</sup>
Calculated frame weight	4.5 kg
Rubber NBR, Shore hardness 60	

**Table 5: MARKING**

Property	Value
Marking height	2mm
Text height	6-8mm

**Table 6: Drawing Information**

Property	Value
Scale	A2 1/4
Sheet	1 of 1
Part No.	3081600419
Material	In Work

**Table 7: Revision History**

Rev	Pos	Created/Mod/Field	Date	BY
1			10-Apr-16 09:10	

**Table 8: Tolerances and Geometry**

Tolerances, if not indicated on drawing, according to AC 570.  
- Rubber: 150  $\mu$ m

Tolerance for non dimensioned surfaces unless otherwise stated.  
 $\pm 0.1$  DEF

Versus nominal geometry in corresponding solid CAD model.

Substituted part unless otherwise specified.  
Material no. 10 55-150 3100 1

For non dimensioned geometry of rubber see model A3081600419\_P1.  
Calculated rubber volume: 1700127mm<sup>3</sup>  
Calculated frame weight: 4.5 kg  
Rubber: NBR, Shore hardness 60

**Table 9: MARKING**

Property	Value
Marking height	2mm
Text height	6-8mm

**Table 10: Drawing Information**

Property	Value
Scale	A2 1/4
Sheet	1 of 1
Part No.	3081600419
Material	In Work

**Table 11: Material Properties**

Material	SA	Material	TM AC-4130 / NBR	Material	MEGA 100
Internal		Internal		See table on sheet 1	

**Table 12: Weight and Volume**

Property	Value
Calculated rubber volume	1700127mm <sup>3</sup>
Calculated frame weight	4.5 kg
Rubber NBR, Shore hardness 60	

**Table 13: MARKING**

Property	Value
Marking height	2mm
Text height	6-8mm

**Table 14: Drawing Information**

Property	Value
Scale	A2 1/4
Sheet	1 of 1
Part No.	3081600419
Material	In Work

**Table 15: Revision History**

Rev	Pos	Created/Mod/Field	Date	BY
1			10-Apr-16 09:10	

**Table 16: Tolerances and Geometry**

Tolerances, if not indicated on drawing, according to AC 570.  
- Rubber: 150  $\mu$ m

Tolerance for non dimensioned surfaces unless otherwise stated.  
 $\pm 0.1$  DEF

Versus nominal geometry in corresponding solid CAD model.

Substituted part unless otherwise specified.  
Material no. 10 55-150 3100 1

For non dimensioned geometry of rubber see model A3081600419\_P1.  
Calculated rubber volume: 1700127mm<sup>3</sup>  
Calculated frame weight: 4.5 kg  
Rubber: NBR, Shore hardness 60

**Table 17: MARKING**

Property	Value
Marking height	2mm
Text height	6-8mm

**Table 18: Drawing Information**

Property	Value
Scale	A2 1/4
Sheet	1 of 1
Part No.	3081600419
Material	In Work

**Table 19: Material Properties**

Material	SA	Material	TM AC-4130 / NBR	Material	MEGA 100
Internal		Internal		See table on sheet 1	

**Table 20: Weight and Volume**

Property	Value
Calculated rubber volume	1700127mm <sup>3</sup>
Calculated frame weight	4.5 kg
Rubber NBR, Shore hardness 60	

**Table 21: MARKING**

Property	Value
Marking height	2mm
Text height	6-8mm

**Table 22: Drawing Information**

Property	Value
Scale	A2 1/4
Sheet	1 of 1
Part No.	3081600419
Material	In Work

**Table 23: Revision History**

Rev	Pos	Created/Mod/Field	Date	BY
1			10-Apr-16 09:10	

**Table 24: Tolerances and Geometry**

Tolerances, if not indicated on drawing, according to AC 570.  
- Rubber: 150  $\mu$ m

Tolerance for non dimensioned surfaces unless otherwise stated.  
 $\pm 0.1$  DEF

Versus nominal geometry in corresponding solid CAD model.

Substituted part unless otherwise specified.  
Material no. 10 55-150 3100 1

For non dimensioned geometry of rubber see model A3081600419\_P1.  
Calculated rubber volume: 1700127mm<sup>3</sup>  
Calculated frame weight: 4.5 kg  
Rubber: NBR, Shore hardness 60

**Table 25: MARKING**

Property	Value
Marking height	2mm
Text height	6-8mm

**Table 26: Drawing Information**

Property	Value
Scale	A2 1/4
Sheet	1 of 1
Part No.	3081600419
Material	In Work

**Table 27: Material Properties**

Material	SA	Material	TM AC-4130 / NBR	Material	MEGA 100
Internal		Internal		See table on sheet 1	

**Table 28: Weight and Volume**

Property	Value
Calculated rubber volume	1700127mm <sup>3</sup>
Calculated frame weight	4.5 kg
Rubber NBR, Shore hardness 60	

**Table 29: MARKING**

Property	Value
Marking height	2mm
Text height	6-8mm

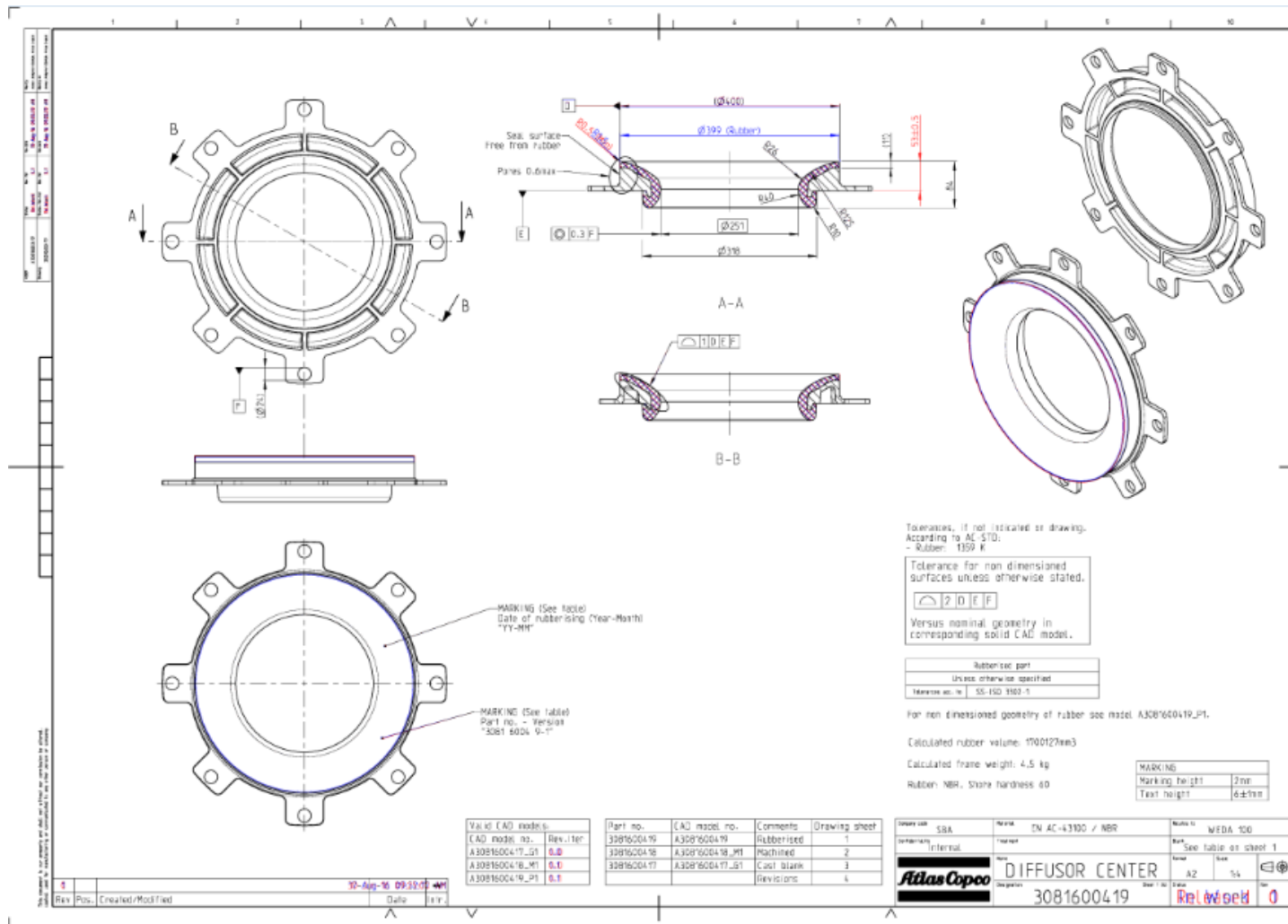
**Table 30: Drawing Information**

Property	Value
Scale	A2 1/4
Sheet	1 of 1
Part No.	3081600419
Material	In Work

**Table 31: Revision History**

Rev	Pos	Created/Mod/Field	Date	BY
1			10-Apr-16 09:10	

# Compare 2D



# Compare 2D



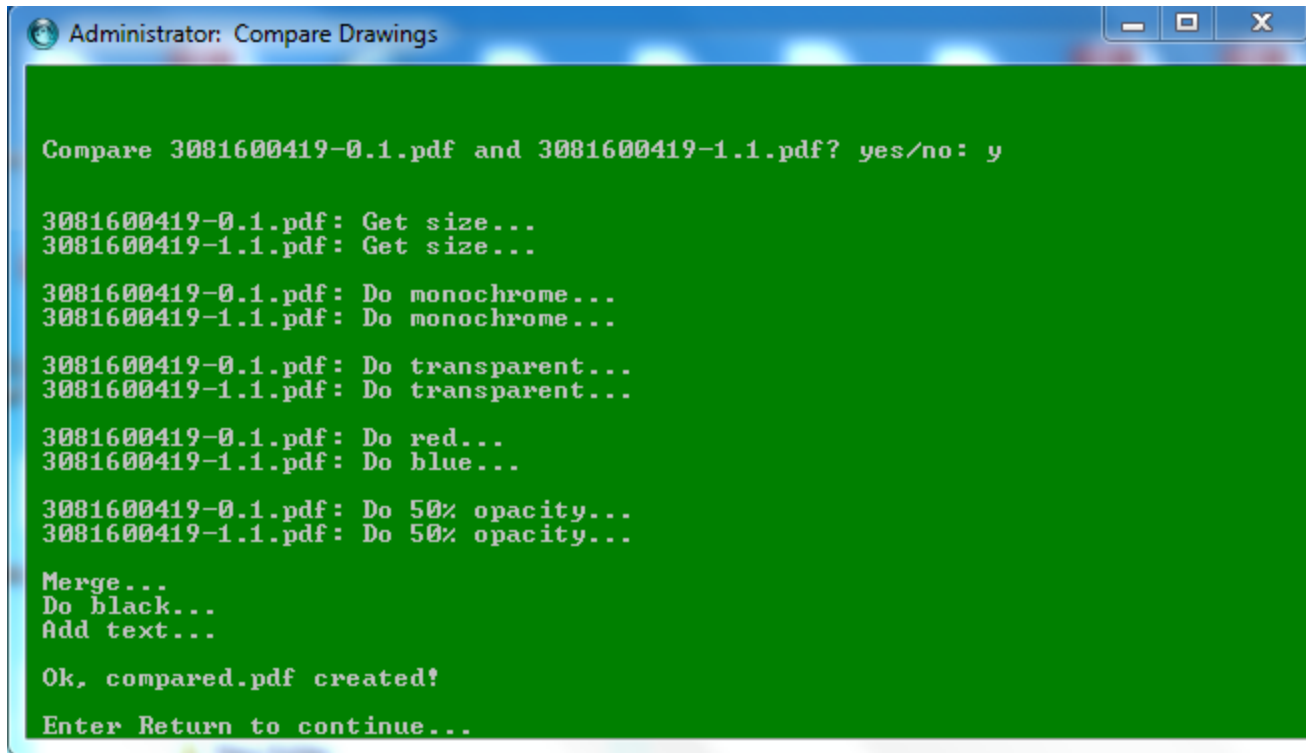
-adaptive-blur • -adaptive-resize • -adaptive-sharpen • -adjoin • -affine • -alpha • -alpha-color • -annotate • -antialias • -append • -attenuate • -authenticate • -auto-gamma • -auto-level • -auto-orient • -backdrop • -background • -bench • -bias • -black-point-compensation • -black-threshold • -blend • -blue-primary • -blue-shift • -blur • -border • -bordercolor • -borderwidth • -brightness-contrast • -cache • -canny • -caption • -cdl • -channel • -charcoal • -chop • -clamp • -clip • -clip-mask • -clip-path • -clone • -clut • -coalesce • -colorize • -colormap • -color-matrix • -colors • -colorspace • -combine • -comment • -compare • -complex • -compose • -composite • -compress • -connected-components • -contrast • -contrast-stretch • -convolve • -copy • -crop • -cycle • -debug • -decipher • -deconstruct • -define • -delay • -delete • -density • -depth • -descend • -des skew • -despeckle • -direction • -displace • -display • -dispose • -dissimilarity-threshold • -dissolve • -distort • -distribute-cache • -dither • -draw • -duplicate • -edge • -emboss • -encipher • -encoding • -endian • -enhance • -equalize • -evaluate • -evaluate-sequence • -extent • -extract • -family • -features • -fft • -fill • -filter • -flatten • -flip • -floodfill • -flop • -font • -foreground • -format • -format[identify] • -frame • -frame[import] • -function • -fuzz • -fx • -gamma • -gaussian-blur • -geometry • -gravity • -grayscale • -green-primary • -hald-clut • -help • -highlight-color • -hough-lines • -iconGeometry • -iconic • -identify • -ift • -immutable • -implode • -insert • -intensity • -intent • -interlace • -interpolate • -interline-spacing • -interword-spacing • -kerning • -kuwahara • -label • -lat • -layers • -level • -level-colors • -limit • -linear-stretch • -linewidth • -liquid-rescale • -list • -log • -loop • -lowlight-color • -magnify • -map • -map[stream] • -mattecolor • -median • -mean-shift • -metric • -mode • -modulate • -moments • -monitor • -monochrome • -morph • -morphology • -mosaic • -motion-blur • -name • -negate • -noise • -normalize • -opaque • -ordered-dither • -orient • -page • -paint • -path • -pause[animate] • -pause[import] • -perceptible • -ping • -pointsize • -polaroid • -poly • -posterize • -precision • -preview • -print • -process • -profile • -quality • -quantize • -quiet • -radial-blur • -raise • -random-threshold • -read-mask • -red-primary • -regard-warnings • -region • -remap • -remote • -render • -repage • -resample • -resize • -respect-parentheses • -reverse • -roll • -rotate • -sample • -sampling-factor • -scale • -scene • -screen • -seed • -segment • -selective-blur • -separate • -sepia-tone • -set • -shade • -shadow • -shared-memory • -sharpen • -shave • -shear • -sigmoidal-contrast • -silent • -similarity-threshold • -size • -sketch • -smush • -snaps • -solarize • -sparse-color • -splice • -spread • -statistic • -stegano • -stereo • -storage-type • -stretch • -strip • -stroke • -strokewidth • -style • -subimage-search • -swap • -swirl • -synchronize • -taint • -text-font • -texture • -threshold • -thumbnail • -tile • -tile-offset • -tint • -title • -transform • -transparent • -transparent-color • -transpose • -transverse • -treedepth • -trim • -type • -undercolor • -unique-colors • -units • -unsharp • -update • -verbose • -version • -view • -vignette • -virtual-pixel • -visual • -watermark • -wave • -wavelet-denoise • -weight • -white-point • -white-threshold • -window • -window-group • -write • -write-mask

# Compare 2D

Jämföra Ritningar

demo: 2D Compare.pl + compared.pdf

# Compare 2D, demo 2D Compare.pl + compared.pdf



```
Administrator: Compare Drawings

Compare 3081600419-0.1.pdf and 3081600419-1.1.pdf? yes/no: y

3081600419-0.1.pdf: Get size...
3081600419-1.1.pdf: Get size...

3081600419-0.1.pdf: Do monochrome...
3081600419-1.1.pdf: Do monochrome...

3081600419-0.1.pdf: Do transparent...
3081600419-1.1.pdf: Do transparent...

3081600419-0.1.pdf: Do red...
3081600419-1.1.pdf: Do blue...

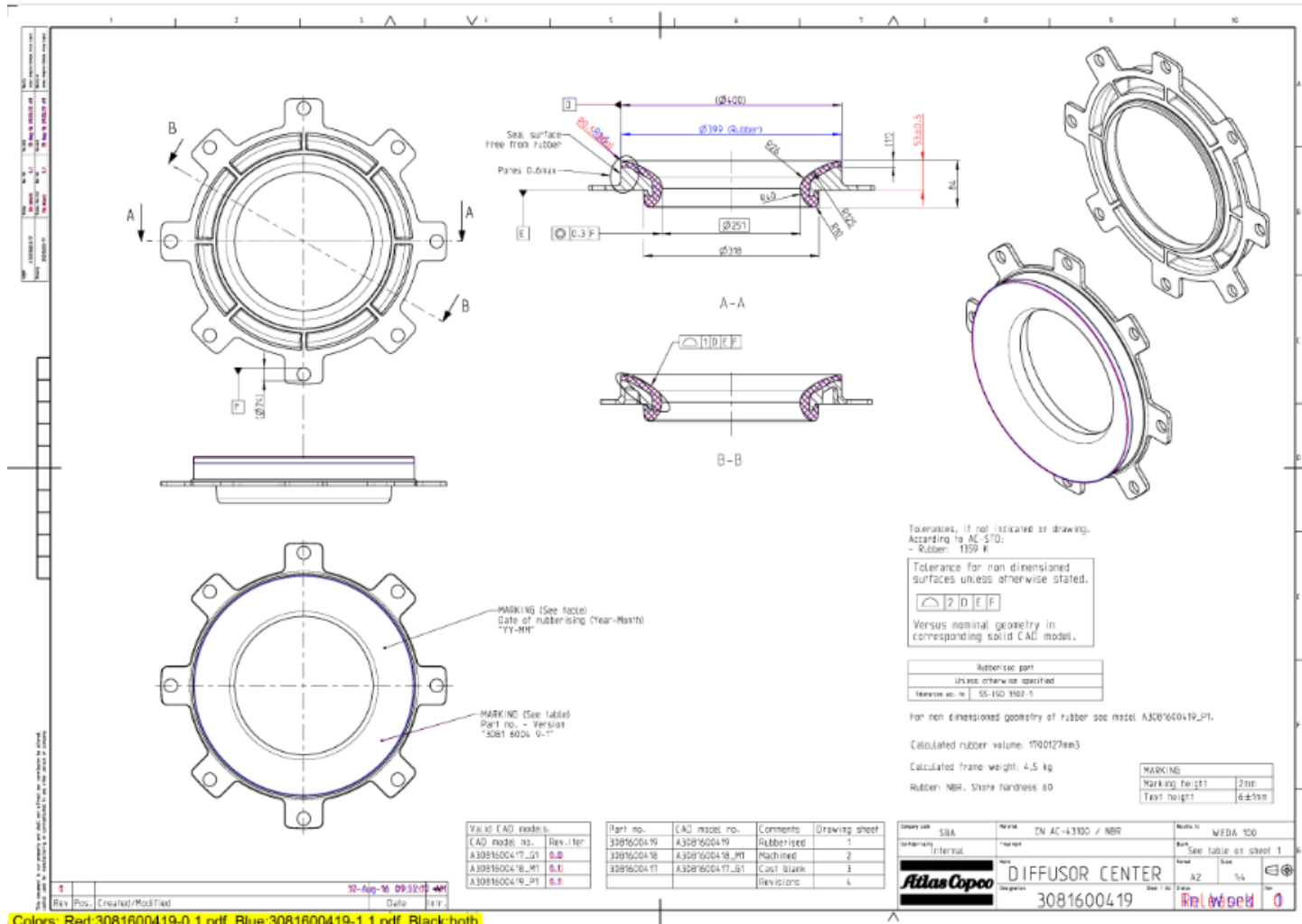
3081600419-0.1.pdf: Do 50% opacity...
3081600419-1.1.pdf: Do 50% opacity...

Merge...
Do black...
Add text...

Ok, compared.pdf created!

Enter Return to continue...
```

# Compare 2D, demo 2D Compare.pl + compared.pdf



Colors: Red:3081600419-0.1.pdf Blue:3081600419-1.1.pdf Black:both

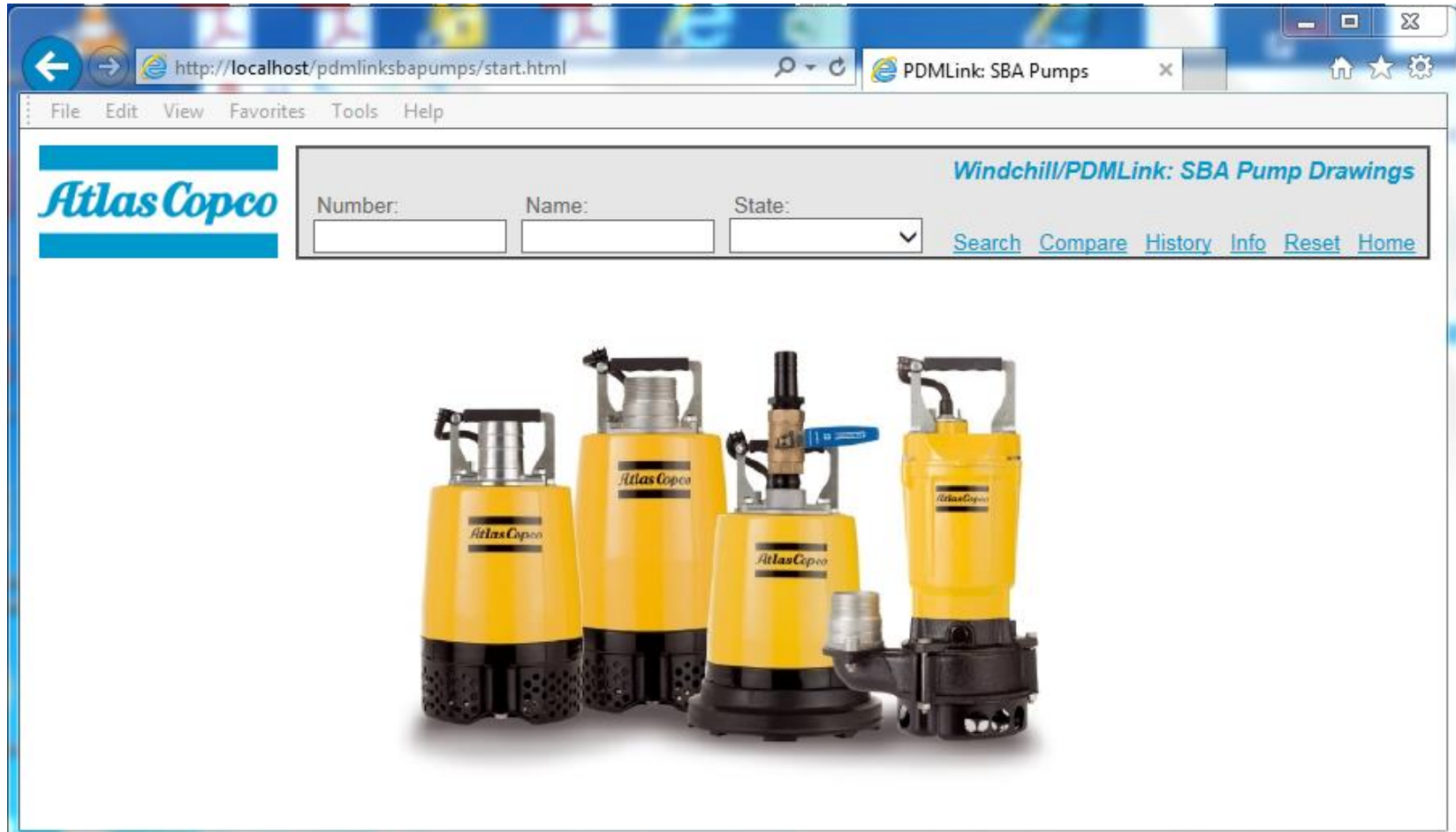


# Compare 2D

Jämföra Ritningar

demo: SBA Pumps, 3081600419.drw

# Compare 2D, demo SBA Pumps



# Compare 2D, demo SBA Pumps

Windchill/PDMLink: SBA Pump Drawings

Number:  Name:  State:

[Search](#) [Compare](#) [History](#) [Info](#) [Reset](#) [Home](#)

Number	Name	Rev	State	Creator
<input type="checkbox"/> <a href="#">3081600419.DRW</a>	DIFFUSOR CENTER	0	RELEASED	jonas lindqvist
<input type="checkbox"/> <a href="#">470W714022.DRW</a>	TOP BRACKET	8	RELEASED	tooaf_adm
<input type="checkbox"/> <a href="#">GECIA_SYMBOLS.DRW</a>	gecia_symbols.drw	0	RELEASED	magnus forssell
<input type="checkbox"/> <a href="#">TEP0000001.DRW</a>	tep0000001.drw	0	RELEASED	magnus forssell
<input type="checkbox"/> <a href="#">TEP0000002.DRW</a>	tep0000002.drw	0	RELEASED	magnus forssell
<input type="checkbox"/> <a href="#">TEP0000011.DRW</a>	FRAME	0	RELEASED	magnus forssell
<input type="checkbox"/> <a href="#">TEP0000013.DRW</a>	SCREW, SPECIAL G3/4"	0	RELEASED	magnus forssell

# Compare 2D, demo SBA Pumps

Windchill/PDMLink: SBA Pump Drawings

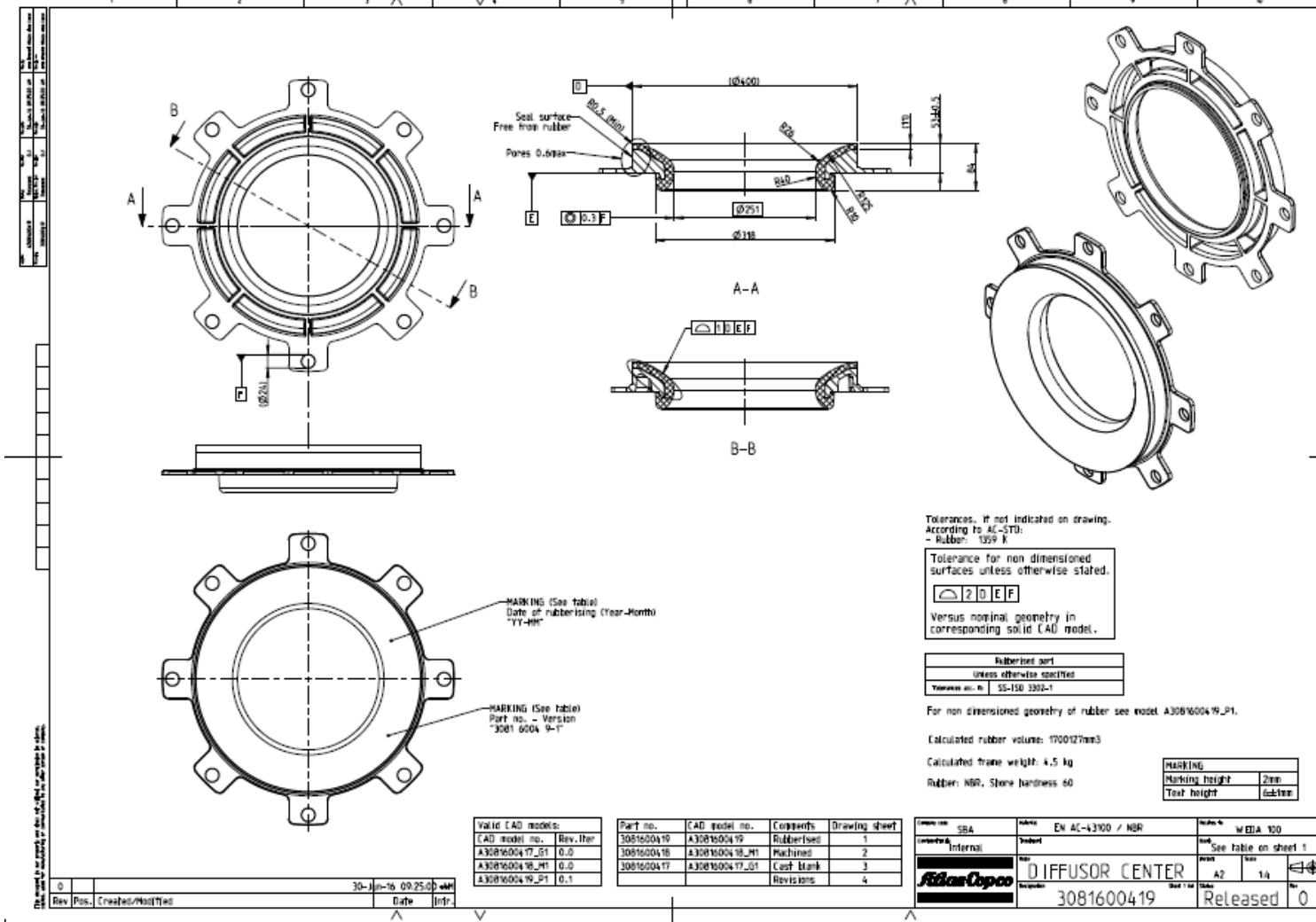
Number:  Name:  State:

[Search](#) [Compare](#) [History](#) [Info](#) [Reset](#) [Home](#)

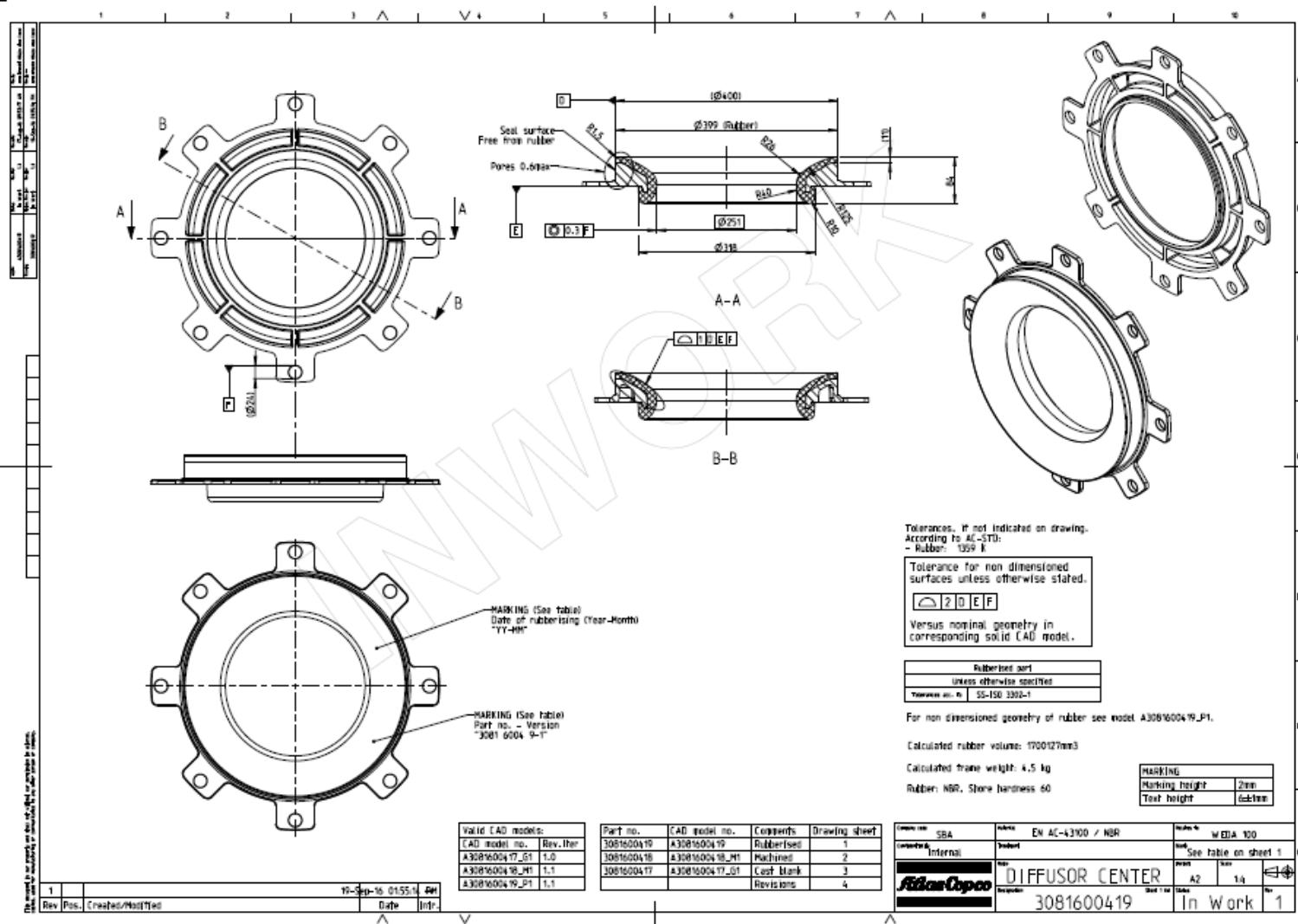
Number	Name	Rev	State	Creator
<input type="checkbox"/> <a href="#">3081600419.DRW</a>	DIFFUSOR CENTER	1	INWORK	jonas lindqvist
<input type="checkbox"/> <a href="#">3081600419.DRW</a>	DIFFUSOR CENTER	0	RELEASED	jonas lindqvist

[Back](#)

# Compare 2D, demo SBA Pumps



# Compare 2D, demo SBA Pumps





# Compare 2D, demo SBA Pumps

openpdf.pdf - Adobe Reader

File Edit View Window Help

Document Properties

Description Security Fonts Custom Advanced

Description

File: openpdf.pdf

Title: Untitled

Author:

Subject:

Keywords: AC watermark: 'INWORK' color: '#cccccc' original: '\\toossepdmlnk01.emea.group.atlascopco.com\DS\Vault\vaultfolder\_218\000000014257f8'

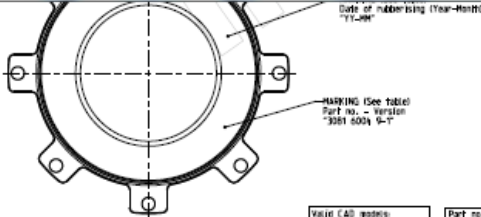
Created: 2016-09-20 16:51:04

Modified: 2016-09-20 16:51:04

Application: Creo Parametric 3.0

Advanced

PDF Producer: GPL Ghostscript 9.18



Date of rubberising (Year-Month) "YY-MM"

MARKING (See table)  
Part no. - Version  
"30816004 V-1"

Versus nominal geometry in corresponding solid CAD model.

Rubberised part  
Unless otherwise specified  
Material: NBR 30-50 3002-1

For non dimensioned geometry of rubber see model A30816004VLP1.

Calculated rubber volume: 1700127mm<sup>3</sup>

Calculated frame weight: 4.5 kg

Rubber: NBR, Shore hardness 60

MARKING	Marking height	2mm
Test height	0.2mm	

Value	CAD model no.	Rev. / Ver.	Comments	Drawing sheet
A30816004_V1	30816004_V1	1,0	Rubberised	1
A30816004_V1	30816004_V1	1,1	Revised	2
A30816004_V1	30816004_V1	1,1	Conf. Blank	3
A30816004_V1	30816004_V1	1,1	Revisions	4

Company	SBA	Model	EN AC-3100 / NBR	Scale	WEDA 100
Internal					See table on sheet 1
Atlas Copco		DIFFUSOR CENTER		A2	1:1
		3081600419		In Work	1

19-09-16 09:55

Rev. Pos. Created/Modified

Date



# Compare 2D, demo SBA Pumps

Windchill/PDMLink: SBA Pump Drawings

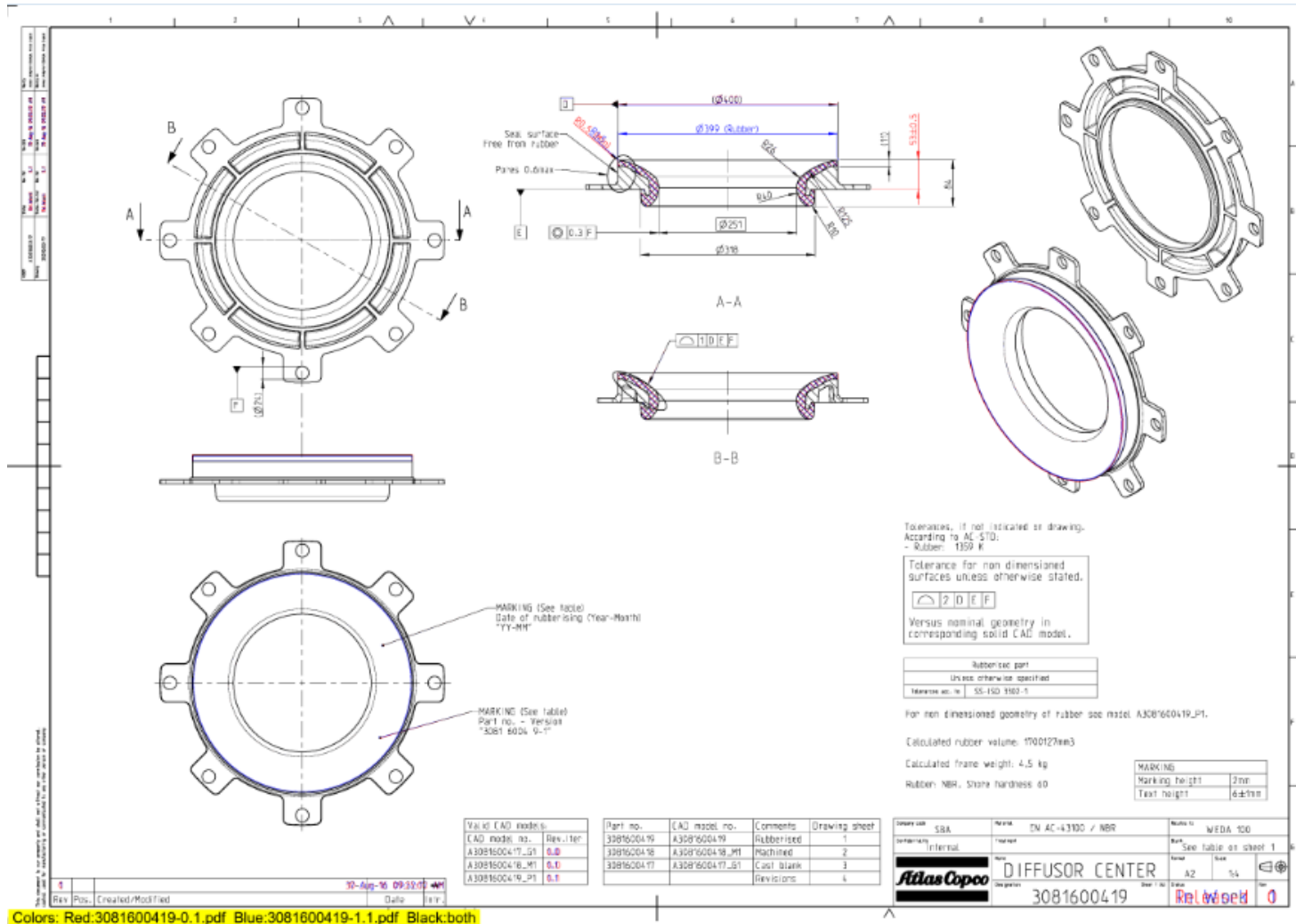
Number:  Name:  State:

[Search](#) [Compare](#) [History](#) [Info](#) [Reset](#) [Home](#)

Number	Name	Rev	State	Creator
<input type="checkbox"/> <a href="#">3081600419.DRW</a>	DIFFUSOR CENTER	1	INWORK	jonas lindqvist
<input type="checkbox"/> <a href="#">3081600419.DRW</a>	DIFFUSOR CENTER	0	RELEASED	jonas lindqvist

[Back](#)

# Compare 2D, demo SBA Pumps



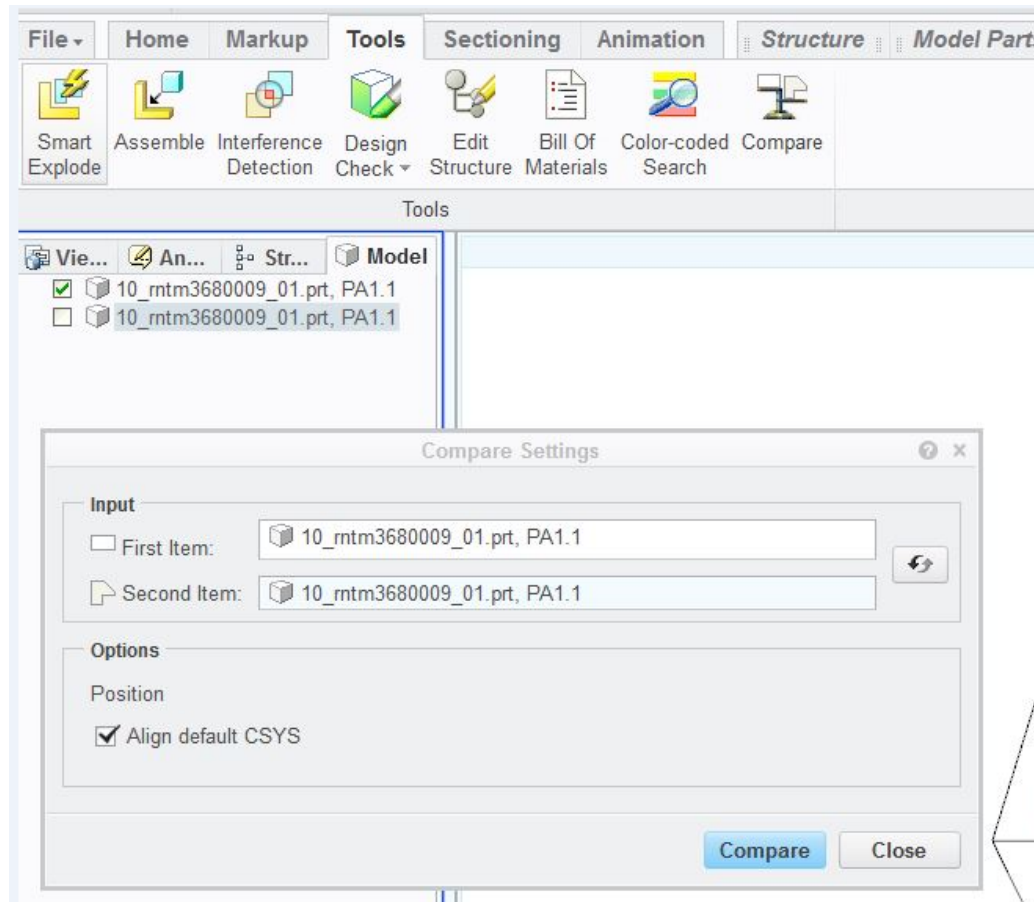
Colors: Red:3081600419-0.1.pdf Blue:3081600419-1.1.pdf Black:both

# Compare 2D, 3D & BOM

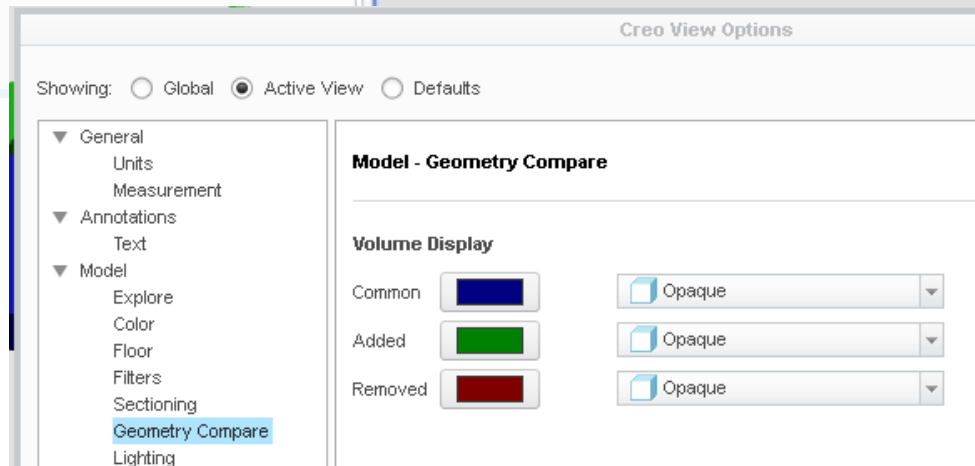
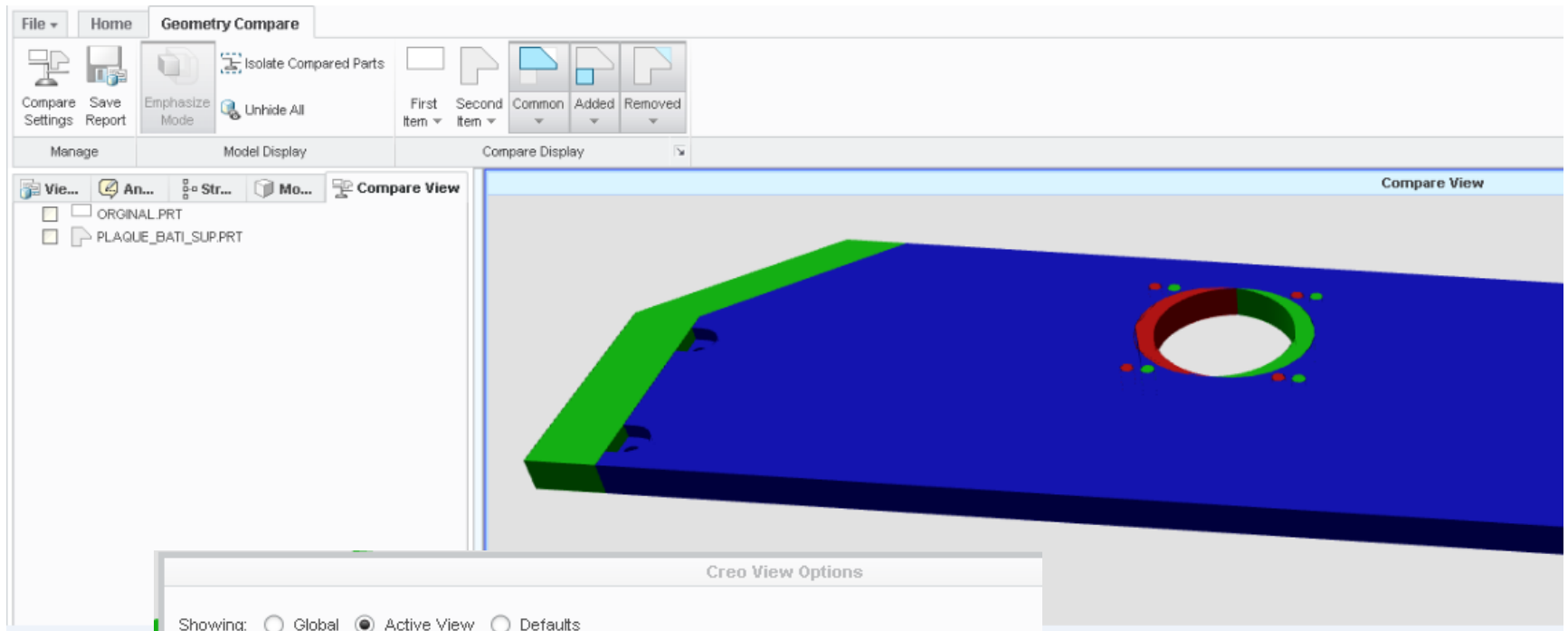
- Jämföra Ritningar
- **Jämföra Modeller**
- Jämföra CAD- och WTPart-struktur

# Compare 3D

## Jämföra modeller med Creo View MCAD



# Compare 3D



# Compare 3D

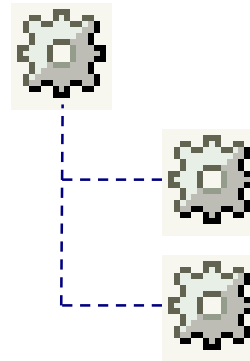
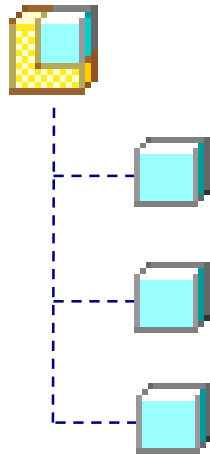
Jämföra modeller ”budget”

# Compare 2D, 3D & BOM

- Jämföra Ritningar
- Jämföra Modeller
- **Jämföra CAD- och WTPart-struktur**

# Compare BOM

## CAD-assembly respektive WTPart-struktur





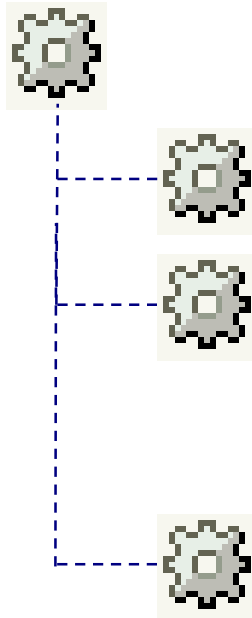
# Compare BOM

## Vad är en WTPart och en WTPart-struktur?

Identity ▲	Name	State	Version	
▲ ⚙ 8431038155, EP8PTI70 HR10-MT, 3.7 (Design)	EP8PTI70 HR10-MT	Released	3.7 (Design)	🔍
⚙ 0324155124, RING, 0.2 (Design)	RING	Released	0.2 (Design)	
⚙ 0663211202, O-RING, 0.2 (Design)	O-RING	Released	0.2 (Design)	
⚙ 0663612400, O-RING, 0.1 (Design)	O-RING	Released	0.1 (Design)	
⚙ 4090031700, O-RING, 0.2 (Design)	O-RING	Released	0.2 (Design)	
⚙ 4150198406, WARNING LABEL, 1.1 (Design)	WARNING LABEL	Released	1.1 (Design)	
⚙ 4250173301, PLUG, 1.1 (Design)	PLUG	Released	1.1 (Design)	
⚙ 4250173700, SPRING (RETURN), 0.2 (Design)	SPRING (RETURN)	Released	0.2 (Design)	
⚙ 4250173900, PLUG, COMPLETE, 1.2 (Design)	PLUG, COMPLETE	Released	1.2 (Design)	
▲ ⚙ 4250176881, SHUT OF VALVE, COMPLETE, 0.5 (Design)	SHUT OF VALVE, COMPLETE	Released	0.5 (Design)	
⚙ 4250172301, SHUT OF VALVE (WITHOUT Ø0.8-HOLE, 0.1	SHUT OF VALVE (WITHOUT...	Released	0.1 (Design)	
⚙ 4250176800, VALVE PIN, 0.1 (Design)	VALVE PIN	Released	0.1 (Design)	
▶ ⚙ 4250177681, AIR MOTOR, 1.1 (Design)	AIR MOTOR	Released	1.1 (Design)	
⚙ 4250245801, SCREW RING LH, 0.3 (Design)	SCREW RING LH	Released	0.3 (Design)	

# Compare BOM

Vad har man WTPart-strukturen till?



# Compare BOM

## Vad har man WTPart-strukturen till?

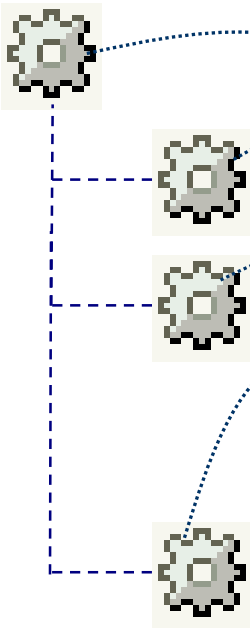
The diagram illustrates the relationship between a physical component (represented by a gear icon) and its corresponding entry in the SAP Design BOM. Dotted lines connect the gear icon to the specific rows in the BOM table, showing how the physical part is mapped to the system's component list.

**SAP Design BOM**

Item No.	Component	Component description	Quantity	Un.	Alt.	St.	Valid From	Valid to	Change No.	P...	SortStng	Item ID	Chg No.	Te	S.	P...
0040	4100110108	O-RING	1	PC			08.09.2014	31.12.9999	ECR014434		0					
0040	4100124200	O-RING	1	PC			03.03.2014	31.12.9999	ECR014434		0					
0050	4100184406	WARNING LABEL	1	PC			03.03.2014	31.12.9999	ECR014434		0					
0060	4200133001	PLUG	1	PC			09.09.2014	31.12.9999	ECR014434		0					
0070	4200133000	SPRING (RETURN)	1	PC			03.03.2014	31.12.9999	ECR014434		0					
0080	4200133003	MOTOR COMPLETE	1	PC			03.03.2014	31.12.9999	ECR014434		0					
0090	4200133001	SHUT OFF VALVE, COMP.	1	PC			03.03.2014	31.12.9999	ECR014434		0					
0100	4200100302	SOLENOI	1	PC			03.03.2014	31.12.9999	ECR014434		0					
0110	4200104400	SCREW RING	1	PC			03.03.2014	31.12.9999	ECR014434		0					
0120	4200203100	BRKT WASHER	1	PC			03.03.2014	31.12.9999	ECR014434		0					
0130	4200144500	WASHER	1	PC			03.03.2014	31.12.9999	ECR014434		0					
0140	4200103400	MT VALVE CPL	1	PC			03.03.2014	31.12.9999	ECR014434		0					
0150	4200144501	SOLENOI COMPLETE	1	PC			09.09.2014	31.12.9999	ECR014434		0					
0160	4200100800	PULSE UNIT CPL	1	PC			03.03.2014	31.12.9999	ECR014434		0					
0170	4200103000	PULSE UNIT CASING CPL	1	PC			03.03.2014	31.12.9999	ECR014434		0					
0180	4200103001	VALVE SEAT (Auto trim)	1	PC			09.09.2014	31.12.9999	ECR014434		0					
0200	4200104400	Plug	1	PC			03.03.2014	31.12.9999	ECR014434		0					
0210	4200103000	MOTOR HOUSING MODUL	1	PC			03.03.2014	31.12.9999	ECR014434		0					
0220	4200103000	Protective cover	1	PC			03.03.2014	31.12.9999	ECR014434		0					
0230	0334113200	SLEPPTID MRLS-MT	1	PC			09.09.2014	31.12.9999	ECR014434		1					
0240	3001444400	BOX KIT B. AC 230V/50Hz	1	PC			09.09.2014	31.12.9999	ECR014434		1					
0250	4200103001	PARALLEL FPN	1	PC			03.03.2014	31.12.9999	ECR014434		0					
0260	4200111000	SHUT OFF SCREW	1	PC			09.09.2014	31.12.9999	ECR014434		0					

# Compare BOM

## Vad har man WTPart-strukturen till?



### Display material BOM: General Item Overview

Material: 4111031131 PULS. PULSE TOOL\_ESPST119 HELI-MNT

#### SAP Design BOM

Item ID	Component	Component description	Quantity	UoM	Alt.	Sub	Valid From	Valid To	Change No.	P.	SortStmg	Item ID	Chg No.	To	G.	F.	L.
0020	4463210005	O-RING	1	PC			09.03.2016	31.12.9999	KCR014634	0	0	0000002					
0040	4463212400	O-RING	1	PC			09.03.2016	31.12.9999	KCR014634	0	0	0000004					
0060	4350184606	WARNING LABEL	1	PC			09.03.2016	31.12.9999	KCR014634	0	0	0000008					
0080	4250173301	PLUG	1	PC			09.03.2016	31.12.9999	KCR014634	0	0	0000006					
0070	4250173200	SPRING (RETURN)	1	PC			09.03.2016	31.12.9999	KCR014634	0	0	0000007					
0090	4250173092	MOTOR COMPLETE	1	PC			09.03.2016	31.12.9999	KCR014634	0	0	0000009					
0090	4250173991	SHUT OFF VALVE, COMP. 1	1	PC			09.03.2016	31.12.9999	KCR014634	0	0	0000009					
0100	4250180902	SLEEVE	1	PC			09.03.2016	31.12.9999	KCR014634	0	0	0000010					
0110	4250180400	SCREW RING	1	PC			09.03.2016	31.12.9999	KCR014634	0	0	0000011					
0120	4250221100	INLET WASHER	1	PC			09.03.2016	31.12.9999	KCR014634	0	0	0000012					
0130	4250246500	WASHER	1	PC			09.03.2016	31.12.9999	KCR014634	0	0	0000013					
0140	4250233400	INT VALVE OPL	1	PC			09.03.2016	31.12.9999	KCR014634	0	0	0000014					
0150	4250246901	SLENDER COMPLETE	1	PC			09.03.2016	31.12.9999	KCR014634	0	0	0000015					
0160	4250251800	PULSE UNIT OPL	1	PC			09.03.2016	31.12.9999	KCR014634	0	0	0000016					
0170	4250251900	PULSE UNIT CASING OPL	1	PC			09.03.2016	31.12.9999	KCR014634	0	0	0000017					
0180	4250252201	VALVE SEAT (Auto trim)	1	PC			09.03.2016	31.12.9999	KCR014634	0	0	0000018					
0200	4250260400	Plug	1	PC			09.03.2016	31.12.9999	KCR014634	0	0	0000020					
0210	4250220800	MOTOR HOUSING MODU. 1	1	PC			09.03.2016	31.12.9999	KCR014634	0	0	0000021					
0220	4250230900	Protective cover	1	PC			09.03.2016	31.12.9999	KCR014634	0	0	0000022					
0230	9004444802	BOX KIT B. AC 218200b.	1	PC			09.03.2016	31.12.9999	KCR014634	1	1	0000024					
0240	4250231000	PARALLEL PIN	1	PC			09.03.2016	31.12.9999	KCR014634	0	0	0000023					
0240	4250231200	SHAFT/SREW	1	PC			09.03.2016	31.12.9999	KCR014634	0	0	0000024					

### Display material BOM: General Item Overview

Material: 4111031131 PULS. PULSE TOOL\_ESPST119 HELI-MNT

#### SAP Production BOM 1100

Item ID	Component	Component description	Quantity	UoM	Alt.	Sub	Valid From	Valid To	Change No.	P.	SortStmg	Item ID	Chg No.	To	G.	F.	L.
0020	4463210005	O-RING	1	PC			09.03.2016	31.12.9999	KCR014634	0	0	0000002					
0040	4463212400	O-RING	1	PC			09.03.2016	31.12.9999	KCR014634	0	0	0000004					
0060	4350184606	WARNING LABEL	1	PC			09.03.2016	31.12.9999	KCR014634	0	0	0000008					
0080	4250173301	PLUG	1	PC			09.03.2016	31.12.9999	KCR014634	0	0	0000006					
0070	4250173200	SPRING (RETURN)	1	PC			09.03.2016	31.12.9999	KCR014634	0	0	0000007					
0090	4250173092	MOTOR COMPLETE	1	PC			09.03.2016	31.12.9999	KCR014634	0	0	0000009					
0090	4250173991	SHUT OFF VALVE, COMP. 1	1	PC			09.03.2016	31.12.9999	KCR014634	0	0	0000009					
0100	4250180902	SLEEVE	1	PC			09.03.2016	31.12.9999	KCR014634	0	0	0000010					
0110	4250180400	SCREW RING	1	PC			09.03.2016	31.12.9999	KCR014634	0	0	0000011					
0120	4250221100	INLET WASHER	1	PC			09.03.2016	31.12.9999	KCR014634	0	0	0000012					
0130	4250246500	WASHER	1	PC			09.03.2016	31.12.9999	KCR014634	0	0	0000013					
0140	4250233400	INT VALVE OPL	1	PC			09.03.2016	31.12.9999	KCR014634	0	0	0000014					
0150	4250246901	SLENDER COMPLETE	1	PC			09.03.2016	31.12.9999	KCR014634	0	0	0000015					
0160	4250251800	PULSE UNIT OPL	1	PC			09.03.2016	31.12.9999	KCR014634	0	0	0000016					
0170	4250251900	PULSE UNIT CASING OPL	1	PC			09.03.2016	31.12.9999	KCR014634	0	0	0000017					
0180	4250252201	VALVE SEAT (Auto trim)	1	PC			09.03.2016	31.12.9999	KCR014634	0	0	0000018					
0200	4250260400	Plug	1	PC			09.03.2016	31.12.9999	KCR014634	0	0	0000020					
0210	4250220800	MOTOR HOUSING MODU. 1	1	PC			09.03.2016	31.12.9999	KCR014634	0	0	0000021					
0220	4250230900	Protective cover	1	PC			09.03.2016	31.12.9999	KCR014634	0	0	0000022					
0230	9004444802	BOX KIT B. AC 218200b.	1	PC			09.03.2016	31.12.9999	KCR014634	1	1	0000024					
0240	4250231000	PARALLEL PIN	1	PC			09.03.2016	31.12.9999	KCR014634	0	0	0000023					
0240	4250231200	SHAFT/SREW	1	PC			09.03.2016	31.12.9999	KCR014634	0	0	0000024					

### Display material BOM: General Item Overview

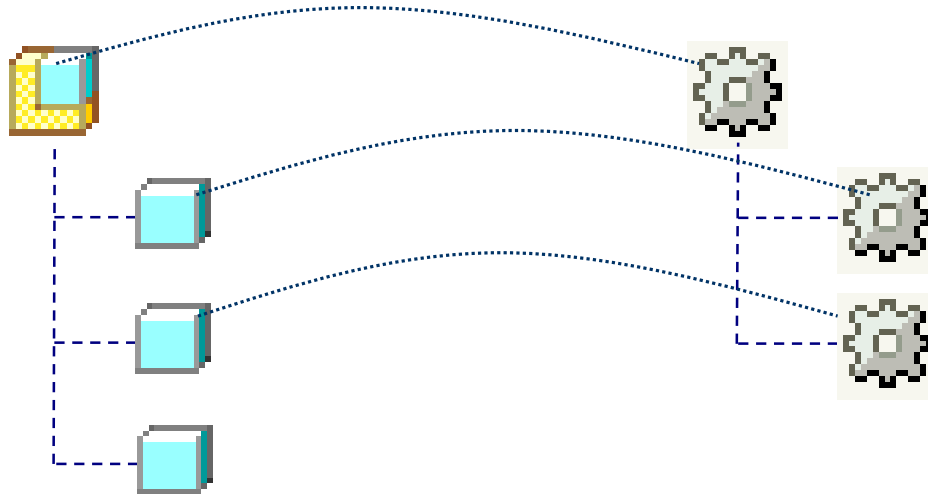
Material: 4111031131 PULS. PULSE TOOL\_ESPST119 HELI-MNT

#### SAP Production BOM 6100

Item ID	Component	Component description	Quantity	UoM	Alt.	Sub	Valid From	Valid To	Change No.	P.	SortStmg	Item ID	Chg No.	To	G.	F.	L.
0020	4463210005	O-RING	1	PC			09.03.2016	31.12.9999	KCR014634	0	0	0000002					
0040	4463212400	O-RING	1	PC			09.03.2016	31.12.9999	KCR014634	0	0	0000004					
0060	4350184606	WARNING LABEL	1	PC			09.03.2016	31.12.9999	KCR014634	0	0	0000008					
0080	4250173301	PLUG	1	PC			09.03.2016	31.12.9999	KCR014634	0	0	0000006					
0070	4250173200	SPRING (RETURN)	1	PC			09.03.2016	31.12.9999	KCR014634	0	0	0000007					
0090	4250173092	MOTOR COMPLETE	1	PC			09.03.2016	31.12.9999	KCR014634	0	0	0000009					
0090	4250173991	SHUT OFF VALVE, COMP. 1	1	PC			09.03.2016	31.12.9999	KCR014634	0	0	0000009					
0100	4250180902	SLEEVE	1	PC			09.03.2016	31.12.9999	KCR014634	0	0	0000010					
0110	4250180400	SCREW RING	1	PC			09.03.2016	31.12.9999	KCR014634	0	0	0000011					
0120	4250221100	INLET WASHER	1	PC			09.03.2016	31.12.9999	KCR014634	0	0	0000012					
0130	4250246500	WASHER	1	PC			09.03.2016	31.12.9999	KCR014634	0	0	0000013					
0140	4250233400	INT VALVE OPL	1	PC			09.03.2016	31.12.9999	KCR014634	0	0	0000014					
0150	4250246901	SLENDER COMPLETE	1	PC			09.03.2016	31.12.9999	KCR014634	0	0	0000015					
0160	4250251800	PULSE UNIT OPL	1	PC			09.03.2016	31.12.9999	KCR014634	0	0	0000016					
0170	4250251900	PULSE UNIT CASING OPL	1	PC			09.03.2016	31.12.9999	KCR014634	0	0	0000017					
0180	4250252201	VALVE SEAT (Auto trim)	1	PC			09.03.2016	31.12.9999	KCR014634	0	0	0000018					
0200	4250260400	Plug	1	PC			09.03.2016	31.12.9999	KCR014634	0	0	0000020					
0210	4250220800	MOTOR HOUSING MODU. 1	1	PC			09.03.2016	31.12.9999	KCR014634	0	0	0000021					
0220	4250230900	Protective cover	1	PC			09.03.2016	31.12.9999	KCR014634	0	0	0000022					
0230	9004444802	BOX KIT B. AC 218200b.	1	PC			09.03.2016	31.12.9999	KCR014634	1	1	0000024					
0240	4250231000	PARALLEL PIN	1	PC			09.03.2016	31.12.9999	KCR014634	0	0	0000023					
0240	4250231200	SHAFT/SREW	1	PC			09.03.2016	31.12.9999	KCR014634	0	0	0000024					

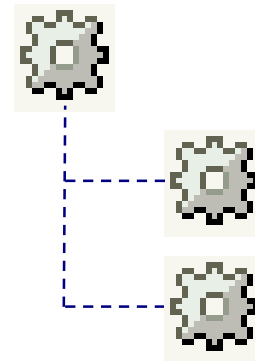
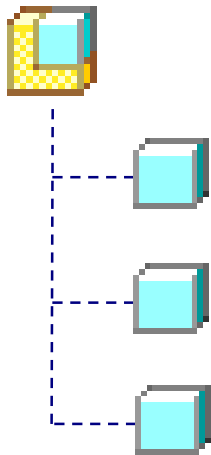
# Compare BOM

Hur förhåller CAD- och WTPart-struktur sig till varandra?



# Compare BOM

Hur jämför man CAD- och WTPart-struktur?



# Compare BOM

## Jämföra CAD- och WTPart-struktur i PDMLink

Number	Name	File Name	Version
4230296380.ASM	TRANSDUCER SET	4230296380.asm	0.2
4230297380.ASM	TRANSDUCER	4230297380.asm	0.3
4230164100.PRT	DRIVER	4230164100.prt	1.2
0516407900.PRT	0516407900.prt	0516407900.prt	0.5
0516407900.PRT	0516407900.prt	0516407900.prt	0.5

# Compare BOM

4230296380.asm, 0.2			4230296380, TRANSDUCER SET, 0.5 (Design)			
Find in Structure			Find in Structure			
Number	Name	Version	Identity	Qua...	Unit	Build Status
4230296380.ASM	TRANSDUCER SET	0.2	4230296380, TRANSDUCER SET, 0.5 (Design)			
0516407900.PRT	0516407900.prt	0.5	0516407900, BEARING, 0.1 (Design)	1	each	Completed
0516407900.PRT	0516407900.prt	0.5	0516407900, BEARING, 0.1 (Design)	1	each	Completed
4230164100.PRT	DRIVER	1.2	4230164100, DRIVER, 0.2 (Design)	1	each	Completed
4230297380.ASM	TRANSDUCER	0.3	4230297380, TRANSDUCER, 0.11 (Design)	1	each	Completed
0216110500.PRT	0216110500.prt	0.26	0216110500, SCREW, 0.1 (Design)	1	each	Completed
0216110500.PRT	0216110500.prt	0.26	0216110500, SCREW, 0.1 (Design)	1	each	Completed
0226330001.PRT	0226330001.prt	0.2	0226330001, TAPPING SCREW, 0.1 (Design)	1	each	Completed
0226330001.PRT	0226330001.prt	0.2	0226330001, TAPPING SCREW, 0.1 (Design)	1	each	Completed
0226330001.PRT	0226330001.prt	0.2	0226330001, TAPPING SCREW, 0.1 (Design)	1	each	Completed
0226330001.PRT	0226330001.prt	0.2	0226330001, TAPPING SCREW, 0.1 (Design)	1	each	Completed
4230060000.PRT	4230060000.prt	6.3				
4230060000.PRT	4230060000.prt	6.3				
4230060000.PRT	4230060000.prt	6.3				
4230060000.PRT	4230060000.prt	6.3				
4230060040.PRT	MATERIAL	2.1	4230060040, MATERIAL, 0.1 (Design)	1	each	Completed
4230060100.PRT	4230060100.prt	4.7				
4230060100.PRT	4230060100.prt	4.7				



# Compare BOM

Jämföra CAD- WTPart-struktur ”homebrew”

# Compare BOM




















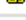










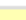










demo: CAD/Part Bom Compare

# Compare BOM, demo CAD/Part Bom Compare

**Atlas Copco**

PDMLink: CAD/Part BOM Compare

Number:  State:  Level:   Drawing  Name [Compare](#) [Home](#)

CAD	State	Ver	Qty		Part	State	Ver	Qty
 <a href="#">4230296380.asm</a>	Released	0.2	1 ea		 <a href="#">4230296380</a>	Released	0.5	1 ea
 <a href="#">0516407900.prt</a>	Released	0.5	2 ea		 <a href="#">0516407900</a>	Released	0.1	2 ea
 <a href="#">4230164100.prt</a>	Released	1.2	1 ea		 <a href="#">4230164100</a>	Released	0.2	1 ea
					 <a href="#">0050030286</a>	Released	0.0	0.5 kg
 <a href="#">4230297380.asm</a>	Released	0.3	1 ea		 <a href="#">4230297380</a>	Released	0.11	1 ea
					 <a href="#">0160602200</a>	Released	0.1	2 ea
					 <a href="#">0211117000</a>	Released	0.1	4 ea
 <a href="#">0216110500.prt</a>	Released	0.26	2 ea		 <a href="#">0216110500</a>	Released	0.1	2 ea
 <a href="#">0226330001.prt</a>	Released	0.2	4 ea		 <a href="#">0226330001</a>	Released	0.1	4 ea
 <a href="#">4230060000.prt</a>	Released	6.3	4 ea		 <a href="#">4230060000</a>	Released	0.0	4 ea
 <a href="#">4230060040.prt</a>	Released	2.1	1 ea		 <a href="#">4230060040</a>	Released	0.1	1 ea
 <a href="#">4230060100.prt</a>	Released	4.7	4 ea		 <a href="#">4230060100</a>	Released	0.0	4 ea
 <a href="#">4230164200.prt</a>	Released	4.1	1 ea		 <a href="#">4230164200</a>	Released	0.1	1 ea
					 <a href="#">4230198802</a>	Released	0.2	1 ea
 <a href="#">4230198802_qst50_i55.prt</a>	In Work	0.0	1 ea					
					 <a href="#">4230199400</a>	Released	0.0	1 ea
 <a href="#">4230199401.prt</a>	Released	1.2	1 ea		 <a href="#">4230199401</a>	Released	1.2	1 ea
					 <a href="#">4230235300</a>	Released	0.1	1 ea
 <a href="#">4230235300_sol.prt</a>	Released	0.2	1 ea					
 <a href="#">4230265380.asm</a>	Released	0.2	1 ea		 <a href="#">4230265380</a>	Released	0.0	1 ea

# Compare BOM, demo CAD/Part Bom Compare



PDMLink: CAD/Part BOM Compare

Number:  State:  Level:   Drawing  Name [Compare](#) [Home](#)

CAD	State	Ver	Qty		Part	State	Ver	Qty
<a href="#">4230296380.asm</a>	Released	0.2	1 ea		<a href="#">4230296380</a>	Released	0.5	1 ea
<a href="#">0516407900.prt</a>	Released	0.5	2 ea		<a href="#">0516407900</a>	Released	0.1	2 ea
<a href="#">4230164100.prt</a>	Released	1.2	1 ea		<a href="#">4230164100</a>	Released	0.2	1 ea
					<a href="#">0050030286</a>	Released	0.0	0.5 kg
<a href="#">4230297380.asm</a>	Released	0.3	1 ea		<a href="#">4230297380</a>	Released	0.11	1 ea

PTC® Windchill®
All Types

Administrator

Products > TOO PRODUCTS > CAD > ASSEMBLY SYSTEMS > COMPONENTS\_4230

Assembly - **4230296380.asm, 0.2**

[Details](#)
[Structure](#)
[Content](#)
[Related Objects](#)
[Changes](#)
[History](#)

Where Used | **Parts** | CAD/Dynamic Documents

Parts:

Name	Actions	Number ↑	Version
TRANSDUCER SET		4230296380	0.5 (D...

Search | Browse

- [0216110500.prt](#)
- [0226330001.prt](#)
- [4230060000.prt](#)
- [4230060040.prt](#)
- [4230060100.prt](#)
- [4230164200.prt](#)
- [4230198802\\_qs](#)
- [4230199401.prt](#)
- [4230235300\\_so](#)
- [4230265380.asr](#)

# Compare BOM, demo CAD/Part Bom Compare



PDMLink: CAD/Part BOM Compare

Number:  State:  Level:   Drawing  Name [Compare](#) [Home](#)

**PTC Windchill**  
Administrator

Products > TOO PRODUCTS > CAD > ASSEMBLY SYSTEMS > COMPONENTS\_4230

Assembly - 4230265380.asm, 0.2

Details | Structure | Content | **Related Objects** | Changes | History | New

Where Used | Parts | CAD/Dynamic Documents

Parts

Part	State	Ver	Qty
<a href="#">4230296380</a>	Released	0.5	1 ea
<a href="#">0516407900</a>	Released	0.1	2 ea
<a href="#">4230164100</a>	Released	0.2	1 ea
<a href="#">0050030286</a>	Released	0.0	0.5 kg
<a href="#">4230297380</a>	Released	0.11	1 ea
<a href="#">0160602200</a>	Released	0.1	2 ea
<a href="#">0211117000</a>	Released	0.1	4 ea
<a href="#">0216110500</a>	Released	0.1	2 ea
<a href="#">0226330001</a>	Released	0.1	4 ea
<a href="#">4230060000</a>	Released	0.0	4 ea
<a href="#">4230060040</a>	Released	0.1	1 ea
<a href="#">4230060100</a>	Released	0.0	4 ea
<a href="#">4230164200</a>	Released	0.1	1 ea
<a href="#">4230198802</a>	Released	0.2	1 ea
<a href="#">4230199400</a>	Released	0.0	1 ea
<a href="#">4230199401</a>	Released	1.2	1 ea
<a href="#">4230235300</a>	Released	0.1	1 ea
<a href="#">4230265380</a>	Released	0.0	1 ea

Name	Actions	Number	Version
<a href="#">4230199401.prt</a>		Released	1.2 1 ea
<a href="#">4230235300_sol.prt</a>		Released	0.2 1 ea
<a href="#">4230265380.asm</a>		Released	0.2 1 ea

# Compare BOM, demo CAD/Part Bom Compare

**Atlas Copco**

PDMLink: CAD/Part BOM Compare

Number:  State:  Level:   Drawing  Name

[Compare](#) [Home](#)

CAD	Name	State	Ver	Qty		Part	Name	State	Ver	Qty	
<a href="#">4230296380.asm</a>	TRANSDUCER SET	Released	0.2	1 ea		<a href="#">4230296380</a>	TRANSDUCER SET	Released	0.5	1 ea	
<a href="#">0516407900.prt</a>	<a href="#">0516407900.prt</a>	Released	0.5	2 ea		<a href="#">0516407900</a>	BEARING	Released	0.1	2 ea	
<a href="#">4230164100.prt</a>	DRIVER	Released	1.2	1 ea		<a href="#">4230164100</a>	DRIVER	Released	0.2	1 ea	
							<a href="#">0050030286</a>	11254103 D 28,8	Released	0.0	0.5 kg
<a href="#">4230297380.asm</a>	TRANSDUCER	Released	0.3	1 ea		<a href="#">4230297380</a>	TRANSDUCER	Released	0.11	1 ea	
							<a href="#">0160602200</a>	SCREW	Released	0.1	2 ea
							<a href="#">0211117000</a>	SCREW	Released	0.1	4 ea
<a href="#">0216110500.prt</a>	<a href="#">0216110500.prt</a>	Released	0.26	2 ea		<a href="#">0216110500</a>	SCREW	Released	0.1	2 ea	
<a href="#">0226330001.prt</a>	<a href="#">0226330001.prt</a>	Released	0.2	4 ea		<a href="#">0226330001</a>	TAPPING SCREW	Released	0.1	4 ea	
<a href="#">4230060000.prt</a>	<a href="#">4230060000.prt</a>	Released	6.3	4 ea		<a href="#">4230060000</a>	STRAIN GAUGE	Released	0.0	4 ea	
<a href="#">4230060040.prt</a>	MATERIAL	Released	2.1	1 ea		<a href="#">4230060040</a>	MATERIAL	Released	0.1	1 ea	
<a href="#">4230060100.prt</a>	<a href="#">4230060100.prt</a>	Released	4.7	4 ea		<a href="#">4230060100</a>	SOLDERING TERMINAL	Released	0.0	4 ea	
<a href="#">4230164200.prt</a>	TRANSDUCER BODY	Released	4.1	1 ea		<a href="#">4230164200</a>	TRANSDUCER BODY	Released	0.1	1 ea	
							<a href="#">4230198802</a>	TRANSDUCER CABLE	Released	0.2	1 ea
<a href="#">4230198802_qst50_l55.prt</a>	<a href="#">4230198802_qst50_l55.prt</a>	In Work	0.0	1 ea							
							<a href="#">4230199400</a>	CABLE CLAMP	Released	0.0	1 ea
<a href="#">4230199401.prt</a>	CABLE CLAMP	Released	1.2	1 ea		<a href="#">4230199401</a>	CABLE CLAMP	Released	1.2	1 ea	
							<a href="#">4230235300</a>	LABEL	Released	0.1	1 ea
<a href="#">4230235300_sol.prt</a>	LABEL	Released	0.2	1 ea							
<a href="#">4230265380.asm</a>	<a href="#">4230265380.asm</a>	Released	0.2	1 ea		<a href="#">4230265380</a>	TRANSDUCER COVER	Released	0.0	1 ea	

# Compare 2D, 3D & BOM



**Harri Holm**  
harri.holm@se.atlascopco.com



*Atlas Copco*

